

## Examples of Community Arts and Leisure Projects

### Projects Aug 2011 to current

#### Biddulph Town Hall

We were commissioned in 2022 by Biddulph Town Council to redesign the external area in front of the Town Hall to provide a more accessible space for use by the Community and for Town Hall Functions. The Town Council wanted to open up the front of the Town Hall removing some of the walling.

Raised planters are to be put in to provide feature landscaped areas, a raised plinth is to be formed to allow the Mining Wheel to be moved back and into a prominent position. Additional Trees and Tree grilles and seating are to be included in a paved area which will also feature a contrasting area of paving evoking the profile of the North Staffordshire mining seam that passes through Biddulph.

#### Station Road Gardens - Phase 1 2019

We were appointed by Biddulph town Council to design a Community Garden on land off Station Road for community use. The project achieved Planning Approval in 2019 and was tendered to 3 Local contractors. Phase 1 was carried out in 2019. And forms 3 paved circles with feature landscaping and seating areas.

Phase 2 to complete 3 further circles is to be carried out at a later date. Land transfers that prevented this have now been secured.

#### Nantwich Town Hall - 2020-2021

We were appointed by Nantwich Town Council to take over a Scheme that had Planning approval for a single storey extension to the Town Hall to the rear. We were required to produce Stage 4 drawings for a Tender, and amend the design to suit Building Regulation Compliance and to allow structure to accommodate a future upward extension. The project was tendered in the Spring of 2021. But put on hold because of increases in materials and labour costs post pandemic.

#### London Gardens

We were Commissioned by Rockfords to set out Landscape Planters for a large Landscaped Garden, each stone was set out in 3D to allow drawings to be sent to the Stone quarry to be cut and delivered for installation.

#### Stockton Brook Studios

We were appointed by our Client at the Fenns to obtain Planning Approval for the conversion of their Barn to an Arts Studio, Both of our Clients were well known Arts and wanted to spend their retirement providing classes in Painting, Pottery, and Sculpture

**St Dominic's Social Centre Stone:** St Dominic's Church and the Birmingham Roman Catholic Diocesan Trustees - £50k Jan 2013 - Replacement Entrance Screen, new entrance porch and internal refurbishment

**U3A Biddulph** Change of use and internal alterations to allow a former part retail unit to be refurbished for Community use.

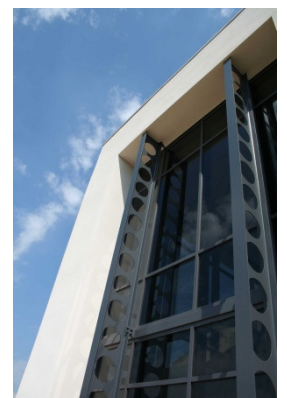
#### Acute Unit – St Georges Stafford part of a £2.4m development

We were required to design a number of garden and courtyard spaces to wrap around the unit to provide recreational space for Patients. Rear Gardens were designed as Secure recreational spaces with a 6m high perimeter wall and fence

Internal Courtyards were designed as Quiet landscaped gardens for Users to sit in, and were only accessible from internal Secure spaces.

#### Projects 2003 to Jul 2011 whilst working for Hulme Upright

**Low Secure Unit – St Georges Stafford** part of a £2.2m development



We were required to design a secure garden and courtyard to provide recreational space for Patients, to medium secure standards.

The Secure Garden and Internal Courtyard Garden were a mirror of the Gardens to the Acute Unit.

**Student Hub: Reaseheath College 2008 to 2009**

Part of the Phase 3 campus redevelopment. Planning approval was granted in 2008 and design developed to Stage F1 shovel ready

The scheme involving new kitchens, dining accommodation, bar, social space, and ancillary accommodation. Facilities were to be used by students in term time, visiting students and as holiday accommodation in the summer break, as a conference facility and for Weddings throughout the year.

**Eccleshall Retirement Care Village £7m Jan 2009 to Apr 2010**

Design of a new 140 unit Use class C2 Retirement Care Village, bordering on the Eccleshall conservation area, for H&H Holman Properties. The unit was to include bars, restaurants, retail and leisure facilities, and included provision of a Winter garden, glass houses, bird watching hide, wetland pond, competition grade bowling green, boules area and grand-children's play area as well as tranquil gardens and seating areas for residents, the facilities were also to be available to the community.

**West End Retirement Village £12m completed 2010 (Kate)**

A new Retirement Village on Liverpool Rd Stoke on Trent incorporating restaurant, community rooms, gymnasium for Retirement and Community uses.

**HAMSTER – Reaseheath College Ph 3: 2008 £670k**

A new Teaching Block to teach simulated Retail to Horticulture & Animal Management students inc Retail Shop and Café Block.

**Sports Turf Workshop: Reaseheath College Ph 2: £350k Completed April 2008.**

Attached to Reaseheath's golf course and is used to service the Colleges green keeping and maintenance courses, and equipment.

**RAF High Wycombe: Gym and Changing facilities 200k and £350k**

This was one of a number of projects the practice undertook to refurbish modernize and extend Sports & leisure facilities across various RAF facilities in the UK & overseas.

**Sir Stanley Mathews Sports Centre: Staffs Uni Leek Road Campus £710k**

Extensions, and internal refurbishment, new changing and Entrance block to the campus Sports Centre. Jul 2004 – Completed Apr 2005

**Projects 1997 to 2003 whilst working for Gaunt Francis Associates and AustinSmith Lord**

Friars Walk Development Reading for Portfolio Ventures

Six phase mixed use development incorporating Landlords works, upgrading of a shopping mall, Health Club, Night Clubs, Hotel, Offices and Residential.

**Children's Crèche** Charring Cross Road London Refurbishment of ground floor Children's crèche and garden areas to provide Community facilities for local offices.

**Projects 1987 to 1998 whilst working for Hunter+Partners and Chamberlain Powell Bonn**

**The Diorama, London NW1**

The Grade I listed Diorama was one of the first movie houses offering 'moving' images - in actual fact it was the audience that moved and not the images. The building had fallen into disrepair and the Crown could not afford the upkeep and management but wanted the building to be put back into good use as an Arts Centre. We produced a scheme and working drawings so that the building could be offered for sale as a Community Centre for the Arts

**Indira Gandhi Cultural Centre for the Arts, New Delhi**



Part of team of 4 responsible for Design and Production Drawings, CPBW placed 7th in competition

**Barbican Arts Centre – London**

Mixed Use development of residential housing and apartment blocks set around an Arts Centre, incorporating Library, Theatre, and Arts Centre set within Central London , the practice (Chamberlain Powell Bonn) spent twenty years working on this project from start to finish